

Anne Davies



AUDIOLOGY



COURSES

The
7th

Steering a True Course

Leadership and Service Development
in the Changing World of Audiology

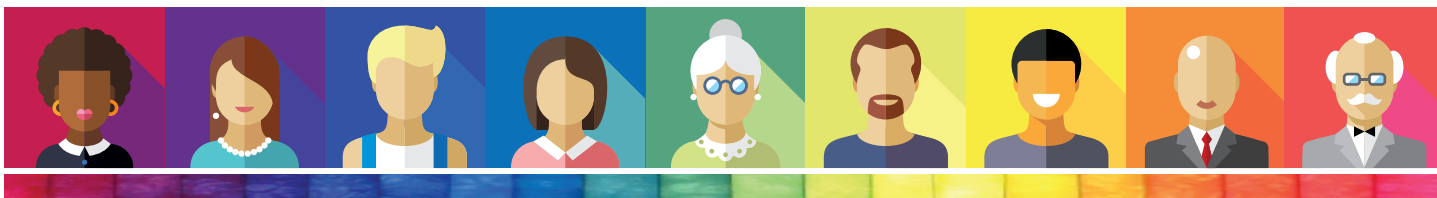
Tuesday 7th - Thursday 9th February 2017

Course Programme

In conjunction with



Queen Margaret University
EDINBURGH



Tuesday 7th February 2017

| | |
|---------|---|
| 8.30am | Registration and Coffee |
| 8.50am | Welcome and Introduction to the Course |
| 9.15am | Ruth Thomsen Scientific Director NHS England (London Region) Successful Outcomes Through Changing Mindsets |
| 10.15am | Christine DePlacido PhD Senior Lecturer Queen Margaret University, Edinburgh Beating Stress in the Workplace |
| 11.15am | Coffee Break |
| 11.30am | Ian Wragg Workforce Modernising Manager (retired) Health Education Yorkshire and the Humber NHS Management, Structure and the Challenges Ahead! |
| 12.30pm | Lunch |
| 1.30pm | Professor Adrian Davis AD CAVE Solutions Limited Hellish Decisions: audiology and value; confidence in the future, builds high performing teams and underpins successful networks! |
| 2.30pm | Discussion |
| 3.30pm | Coffee Break |
| 3.45pm | Adam Beckman Head of Audiology Services Plymouth Hospitals NHS Trust Quality |
| 5.00pm | Christine DePlacido PhD Senior Lecturer Queen Margaret University, Edinburgh A Relaxation Taster Session |
| 5.30pm | Close of day |

Wednesday 8th February 2017

| | |
|---------|---|
| 8.45am | Coffee |
| 9.15am | Jonathan Parsons Managing Director, Consultant Clinical Scientist Chime Social Enterprise, Exeter Leadership - Some of What it Takes |
| 10.15am | John Day Clinical Director of Audiology Betsi Cadwaladr University Health Board, North Wales Strategic Management in Audiology - Recognising and Influencing the Bigger Picture |
| 11.15am | Coffee Break |
| 11.30am | Will Brassington Head of Audiology Nottingham Audiology Services Influencing Change: Can an Hour With me Really Change Your Life? |
| 12.30pm | Lunch |
| 1.30pm | Tony Corcoran Head of Service (retired) Bournemouth Provider Driven Service Development |
| 2.30pm | Dr John Fitzgerald Consultant Clinical Scientist, Head of Audiological Services Norfolk and Norwich University Hospitals Making Service Development Happen |
| 3.30pm | Coffee break |
| 3.45pm | Jonathan Parsons Managing Director, Consultant Clinical Scientist Chime Social Enterprise, Exeter From NHS Service to Social Enterprise - Some Reflections on the Journey and Destination |
| 4.45pm | Discussion |
| 5.30pm | Close of day |
| Evening | Course Meal |

Thursday 9th February 2017

| | |
|---------|--|
| 8.45am | Coffee |
| 9.15am | Tony Corcoran Head of Service (retired) Bournemouth Innovation |
| 10.15am | Christine DePlacido PhD Senior Lecturer Queen Margaret University, Edinburgh Managing Staff - What Would Freud Do? |
| 11.15am | Coffee Break |
| 11.30am | Ruth Thomsen Scientific Director NHS England (London Region) Changing Mindsets: Workshop |
| 12.30pm | Lunch |
| 1.30pm | Will Brassington Head of Audiology Nottingham Audiology Services Leadership - The Uncut Guide! |
| 2.30pm | Coffee, Discussion, Feedback on Course |
| 3.30pm | Close of Course |

This course was set up and run at South Tees Hospitals NHS Foundation Trust, from 2010 to 2015.

In conjunction with



Queen Margaret University
EDINBURGH

