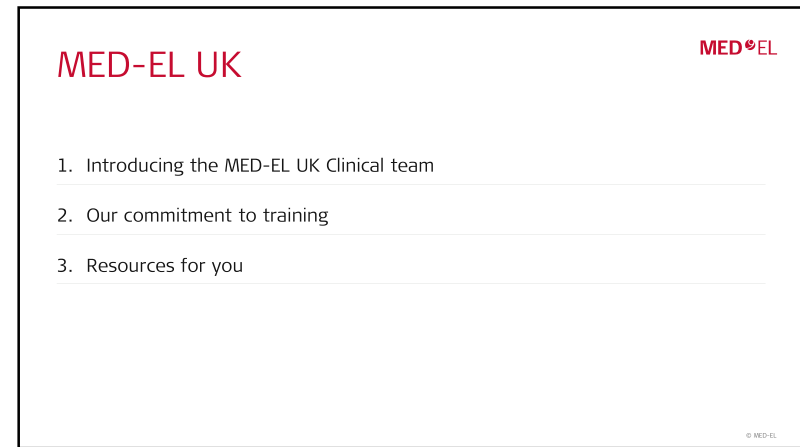


9/29/2020



1



2



3

Your UK clinical support team

Available to you, differently

Cumulative experience of >150 years in Audiology

RCCP or HCCP registered

Various training routes and international experience

Geographical coverage of the UK & Ireland

clinicalsupport@medel.co.uk

Andrew Demelza

Eilene Ben Chris

Fiona Stephanie Nicola

© MED-EL

4

Our training and education commitment

Source: MED-EL UK Clinical Charter

We provide support in the style best suited to your way of working.

We recognise that CI teams and other supporting professionals work in different ways and adapt their own ways of working to suit individual users and their families.

We aim to reflect this and offer clinical support in a variety of places from hospitals to schools and in partnership with the NHS, private healthcare providers and the voluntary sector.

© MED-EL

5

Our training and education commitment

Source: MED-EL UK Clinical Charter

Deliver high quality training to enable you to best support hearing implant users and candidates..

Offering and delivering training; from undergraduate training to expert workshops, and one to one trainings, is at the core of our clinical support role.

As well as regular Fitting Workshops, Rehabilitation Symposia, and Clinical Symposia, we are also happy to tailor in-house or one to one training to individual needs, and to adapt content for different professional groups.

© MED-EL

6

MED-EL WW

clinicalsupport@medel.co.uk

A dedicated network of specialists and support with international teams and personnel across many areas:

R&D
Clinical Research
Rehabilitation
Candidacy

Awareness and Public Health
Education



© MED-EL

7

Resources for you

www.medel.com/pro

<https://academy.medel.com/login/index.php>

<https://blog.medel.pro/>

White Paper

MED-EL

Revision 1.2: 16/jan/2020

The ADHEAR System – Review of clinical evidence and user satisfaction

Product B, Axiom/Power 4, C, D, E, F, G, H, I, J, K, L, M, N, O, P, Q, R, S, T, U, V, W, X, Y, Z

Applied hearing Science, MED-EL, Business Unit Hearing, 6020 Innsbruck, Austria

Technology Innovation, MED-EL, Business Unit Hearing, 6020 Innsbruck, Austria

Correspondence should be addressed to: Sonja Probst, AppliedHearing@concordmed.com



8

Resources for you

medel.com/pro

Lunch and Learn

You Tube channels

<https://medel.libsyn.com/>

hearLIFE MED-EL

Lunch & Learn Webinars This October: Let's Talk Cochlear Implants

We have a CI-packed webinar series for you this October. From remote programming with MED-EL CI systems, to introductions to MED-EL's new third-generation single unit audio processor – the RONDO 3 – and the features of the new MAESTRO 9 fitting software.

You can register for any of these webinars by clicking on the links below*.

*Please note, registration closes at 9:30am on the morning of the applicable webinar.

Programming in the home and other remote solutions

Tues 6th October, 12:00-12:45 (BST)

9

Resources for you

Support pages

English | Italiano | Deutsch | Français | Español | 中文 | 日本語 | 한국어 | العربية | हिन्दी | ไทย | ភាសាខ្មែរ | ភាសាសិង្ហបុរី

ABOUT HEARING | HEARING SOLUTIONS | SUPPORT | COMMUNITY

Cochlear Implants | Electric Acoustic Stimulation | Middle Ear Implants | Bone Conduction Implants | Bone Conduction Systems

SONNET 2
CI and EAS Audio Processor

These support guides will help you handle and care for the SONNET 2 & SONNET 2 EAS Audio Processor.

Support for SONNET 2

Handling & Basics
Basic Care and Maintenance
Accessories
Connectivity
Troubleshooting
Frequently Asked Questions
Downloads

Handling & Basics
Assemble your audio processor, change batteries, and other daily tasks.
Discover More >

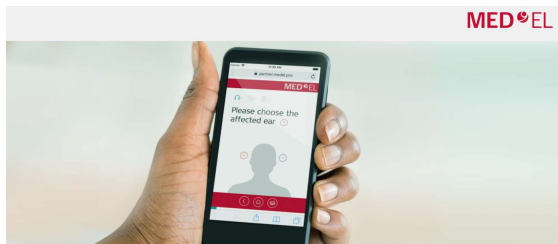
Basic Care and Maintenance
Keep your audio processor in the best possible condition with these simple daily care tips.
Discover More >

Connectivity
Connect to your phone and assistive listening devices for clearer, noise-free listening.
Discover More >

Troubleshooting
Frequently Asked Questions
Downloads

10

<https://partner.medel.pro/candidacy/>



11



12