



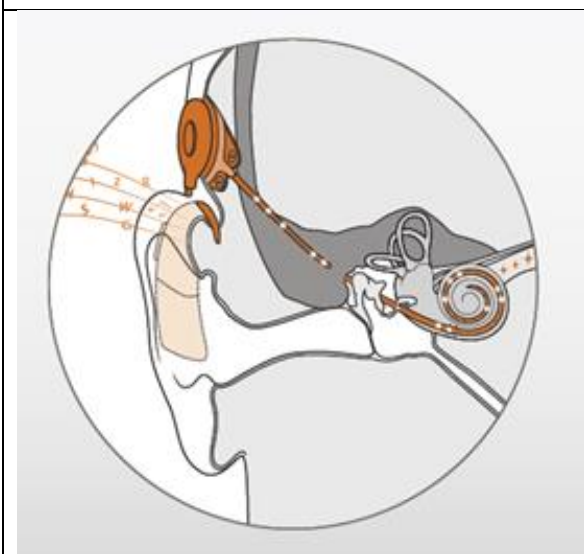
What is a Cochlear Implant?



This leaflet is about how a **Cochlear Implant** works and why it might help you.



You have a **Severe to Profound** hearing loss. This means you have a lot of damage to your hearing and hearing aids may not always help you to hear.



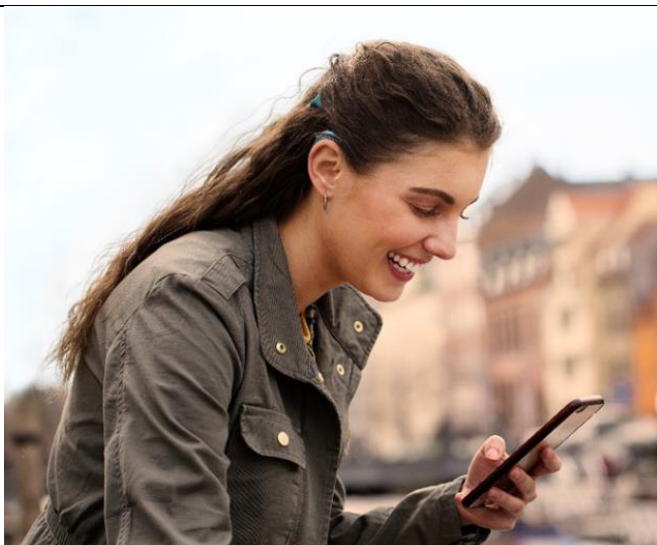
Cochlear Implants work differently to hearing aids. They change sound to **electrical messages**. This means sounds are easier to hear.



A Cochlear Implant has a **microphone** that goes behind your ear. This looks a lot like a hearing aid. There is also a **round magnet** that goes on the side of your head.



A small part of the implant is put inside your ear during an **ear operation**. The operation is **routine**, and you can usually go home the same day or the next day.



The Cochlear implant can be **put on and taken off easily**, even if you have long hair. You can do this yourself, or others can help you.



A special waterproof cover keeps the Cochlear Implant dry in the swimming pool.

It is **safe to play most sports** with a Cochlear Implant.



It can take a few months to get used to the sound of a Cochlear Implant.

Voices will sound more natural the more you wear the implant.



To find out if you are suitable you need to meet a **Cochlear Implant Audiologist**. They will ask you questions and do some tests. For example, they will ask you to listen to words and tell them what you hear.



You will **meet someone who uses a Cochlear Implant** so you can ask them questions and find out more.



A Cochlear Implant may not be right for you. The Cochlear Implant Audiologist will talk to you about how it might help.



It is your choice if you want a Cochlear Implant.

You can take as long as you want to think about it and decide.

Going to meet a Cochlear Implant Audiologist does not mean you are agreeing to have a Cochlear Implant.



BRITISH ACADEMY
OF AUDIOLOGY



British
Cochlear
Implant
Group



If a Cochlear Implant is not right for you, hearing aids will still help you to hear.

Your **Hearing Aid Audiologist** can help you with your hearing aids.



This website has more information about Cochlear Implants:

<https://www.hearitogether.org.uk/hearing-technology/cochlear-implants>



British
Cochlear
Implant
Group

There are 23 Cochlear Implant departments around the country. A list of local Cochlear Implant services can be found here:

<https://www.bciq.org.uk/type/contact-centre/>