

Assessing Complex Cases

Auditory Neuropathy Spectrum Disorder

Auditory Neuropathy Spectrum Disorder

ANSD is a label for a pattern of test results:

- Evidence of cochlear function
- Evidence of neural de-synchrony

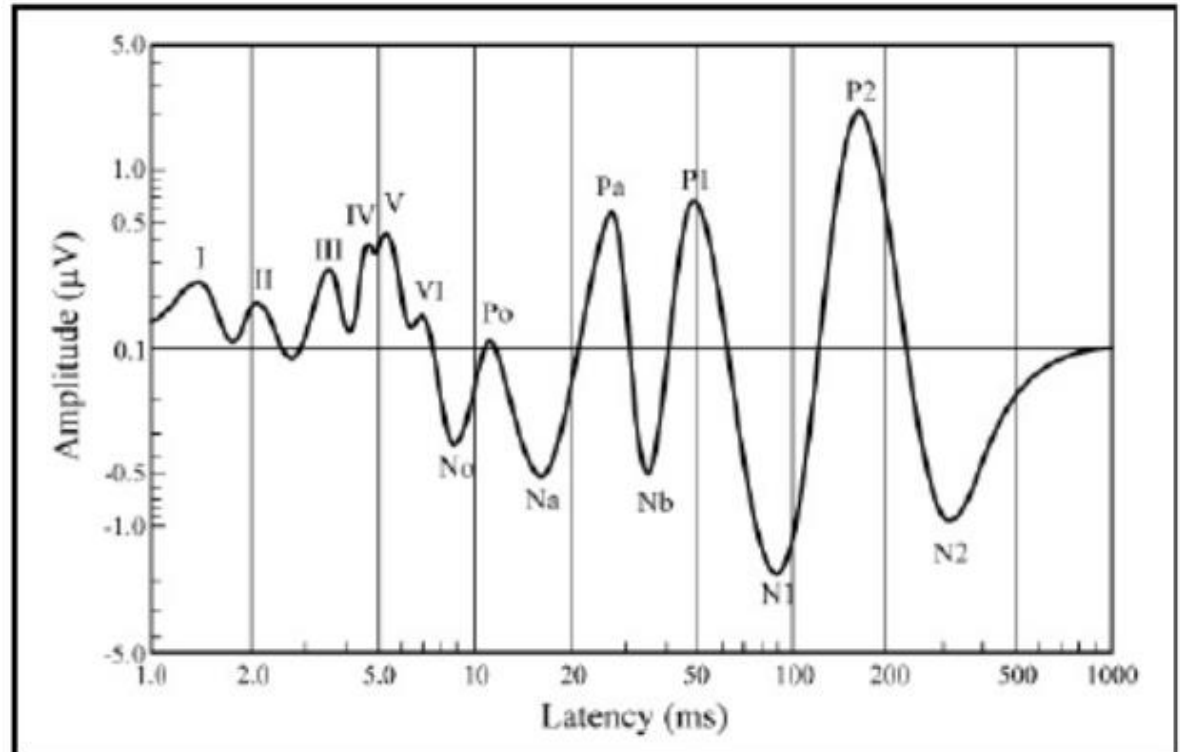
Wide range of possible causes including:

- Immaturity
- Medical concern
- Unknown

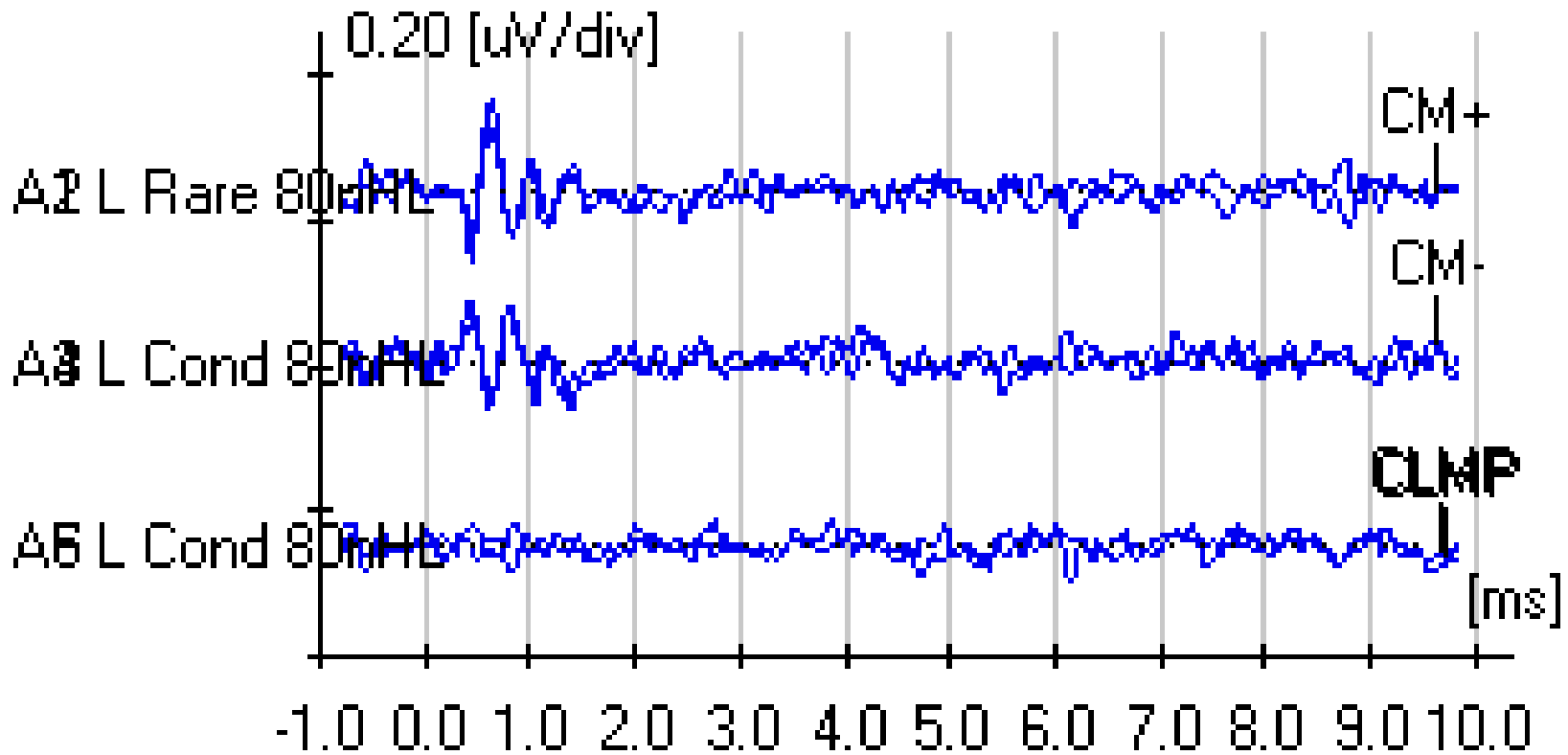
Cochlear Microphonics

Parameters

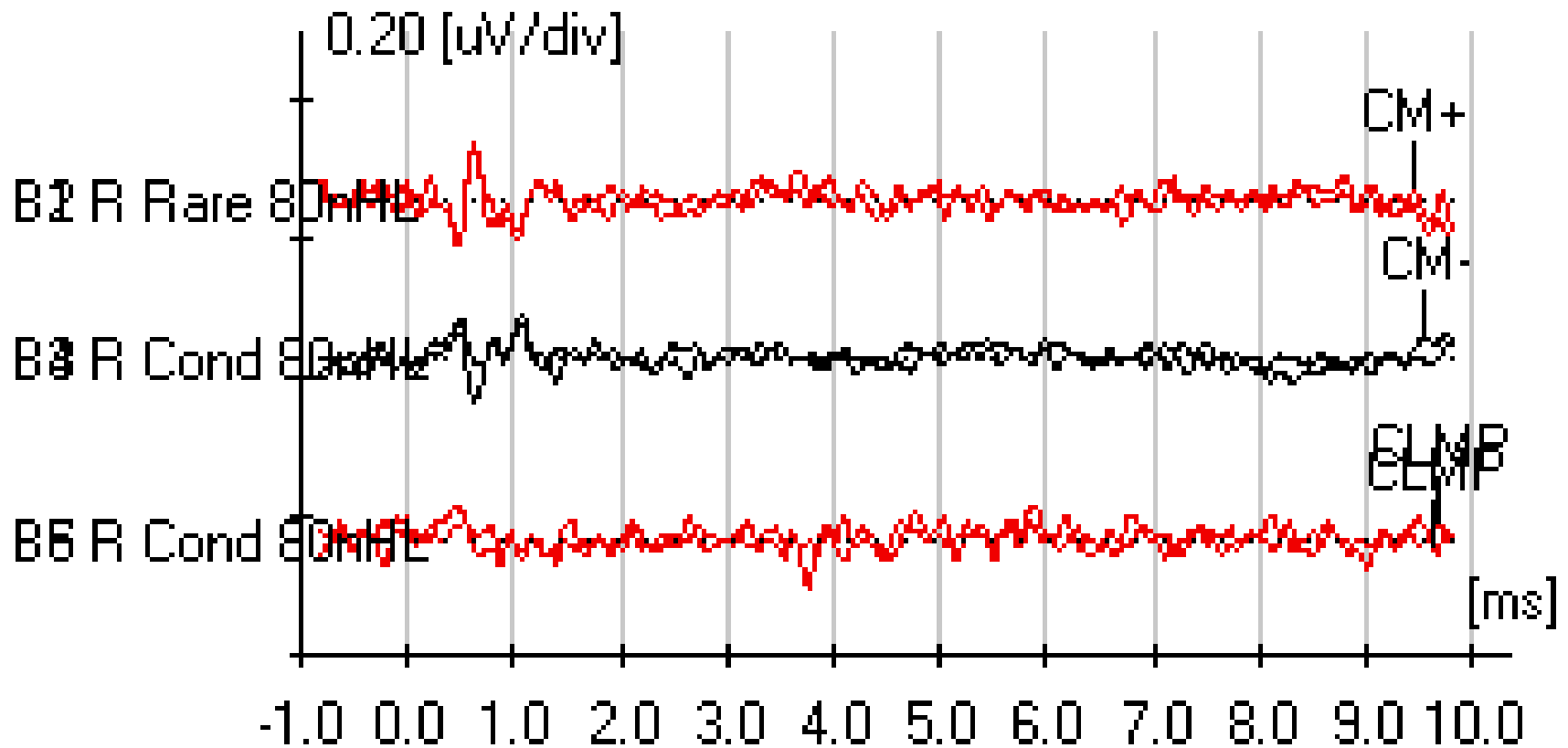
- Cochlea is a microphone



Typical CM



Typical CM



Parameters

- **Within the protocol**
 - Stimulus rate: 80-90Hz
 - Filter – higher high pass
 - Artefact rejection - $3\mu\text{V}$
- **Manually adjust**
 - Stimulus intensity: 80/85dBeHL
 - Stimulus polarity

Protocol

- **Transducer**
 - Insert

- **What else is needed?**
 - Click ABR If there's a CM
 - Clamped run
 - OAE
 - 1kHz
 - Tympanometry

Intended Learning Outcomes

- Auditory Neuropathy Spectrum Disorder
- Cochlear Microphonic Testing
- Atypical morphologies
- Shunt