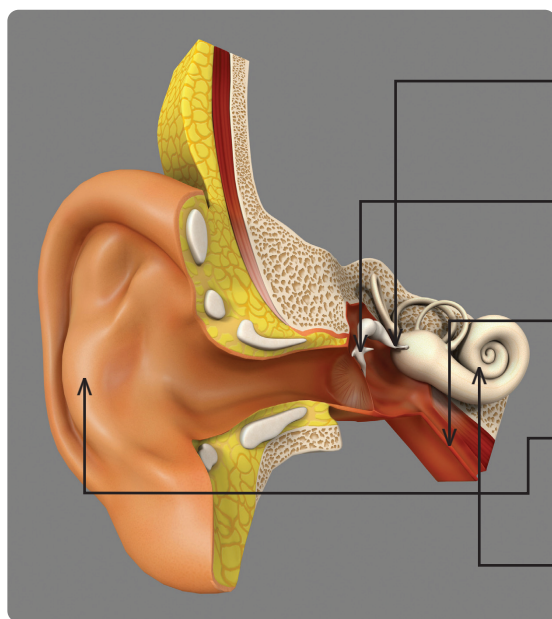


# Audiology Careers



**BAA**  
BRITISH ACADEMY  
OF AUDIOLOGY



S I R P

M A U

E S A H A

T B

P N A

O G N

F

O T

## What is Audiology?

- **Audiology** is about identifying, assessing and treating hearing and balance function and their associated disorders.
- **Audiology** is focussed on providing person centred approaches to improving communication ability and balance function.
- **Audiologists** are respectful and caring. Providing a sympathetic, friendly and professional approach to diagnosis and rehabilitation of people with hearing and balance issues.

With many different work settings, Audiologists work with all members of the public. The role is varied and demands a wide skill set and continued learning throughout your working life.



BAA Admin  
Blackburn House  
Redhouse Road  
Seafield Bathgate  
West Lothian  
EH47 7AQ

t: +44 (0)1625 290046  
e: [admin@baaudiology.org](mailto:admin@baaudiology.org)  
w: [www.baaudiology.org](http://www.baaudiology.org)



Want to keep up to date with the British Academy of Audiology? Follow us on Twitter: @BAAudiology



Search for British Academy of Audiology in the "groups" section or visit the page at [www.facebook.com/baaudiology](http://www.facebook.com/baaudiology)



Search for British Academy of Audiology in the "groups" section. Check us out at [www.linkedin.com](http://www.linkedin.com)

# About You



**BAA**  
BRITISH ACADEMY  
OF AUDIOLOGY

## **Can you talk to anyone and everyone?**

*Audiologists communicate with people of all ages and from all backgrounds.*

## **Do you think things through carefully?**

*Audiologists have to be able to think logically and use an analytical scientific approach.*

## **Are you ready to test your skills every day?**

*If you have an interest in the latest science and technology, you also need to update and test your knowledge against your experience every day.*

## **Do you enjoy working with other people?**

*Many Audiologists work as part of a healthcare team.*

## **Can you work to a deadline and still get it right?**

*Audiologists produce highly accurate work even when under pressure.*

## **Do you understand and respond to other people's feelings?**

*Audiologists work in an empathetic way with their patients, to support them.*

See more at:

[www.baaudiology.org](http://www.baaudiology.org) or [www.healthcareers.nhs.uk](http://www.healthcareers.nhs.uk)



BAA Admin  
Blackburn House  
Redhouse Road  
Seafield Bathgate  
West Lothian  
EH47 7AQ

t: +44 (0)1625 290046  
e: [admin@baaudiology.org](mailto:admin@baaudiology.org)  
w: [www.baaudiology.org](http://www.baaudiology.org)



Want to keep up to date with the British Academy of Audiology? Follow us on Twitter: @BAAudiology



Search for British Academy of Audiology in the "groups" section or visit the page at [www.facebook.com/baaudiology](http://www.facebook.com/baaudiology)



Search for British Academy of Audiology in the "groups" section. Check us out at [www.linkedin.com](http://www.linkedin.com)