

Nottingham Audiology Dementia Service

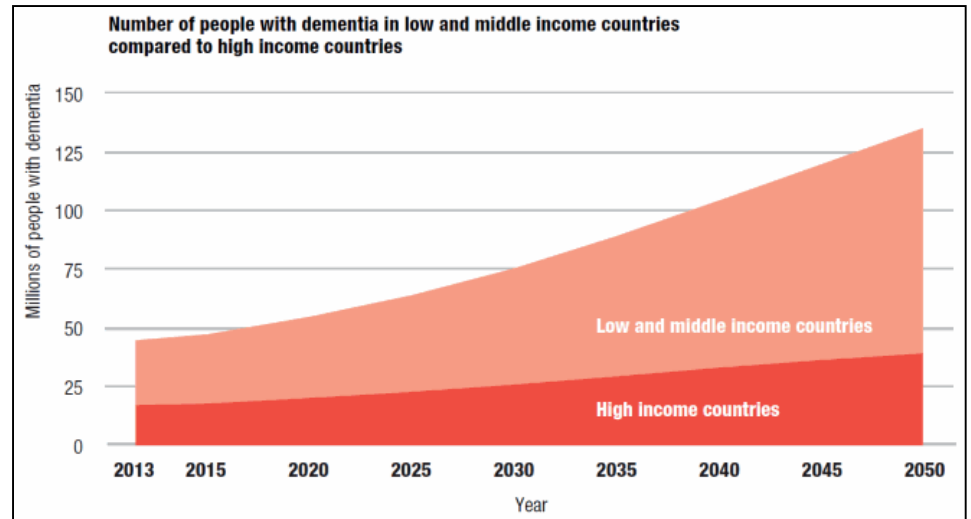
**A Hearing Care Initiative for Patients with
Dementia**

Alissa Moakes
Specialist Audiologist

We are here for you

Hearing Loss and Dementia

- **1 in 14 of people over 65 living with Dementia**
- **6.3 million people over 65 years of age have a hearing loss.**
- **About 300 000 people over 70 have both hearing loss and dementia.**



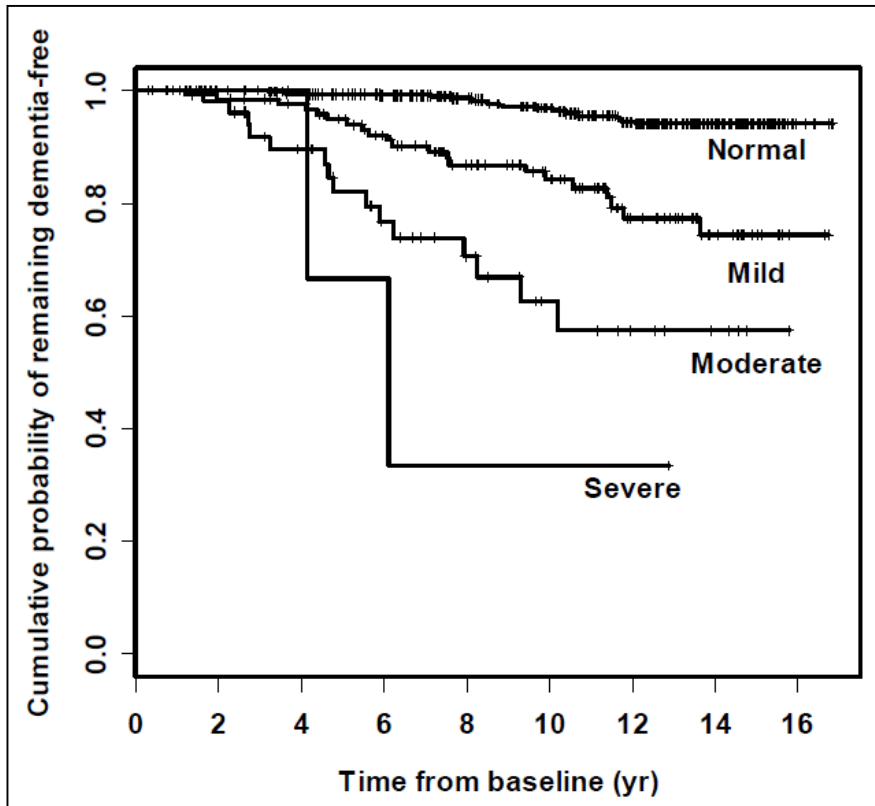
Hearing and Cognition

- **Listening, understanding and communication require cognition, attention and memory as well as hearing**
- **Age related changes occur in hearing and cognition:**
 - Ageing slows processing
 - Reduced comprehension of speech
 - Loss in communication with others in group interaction

Symptoms

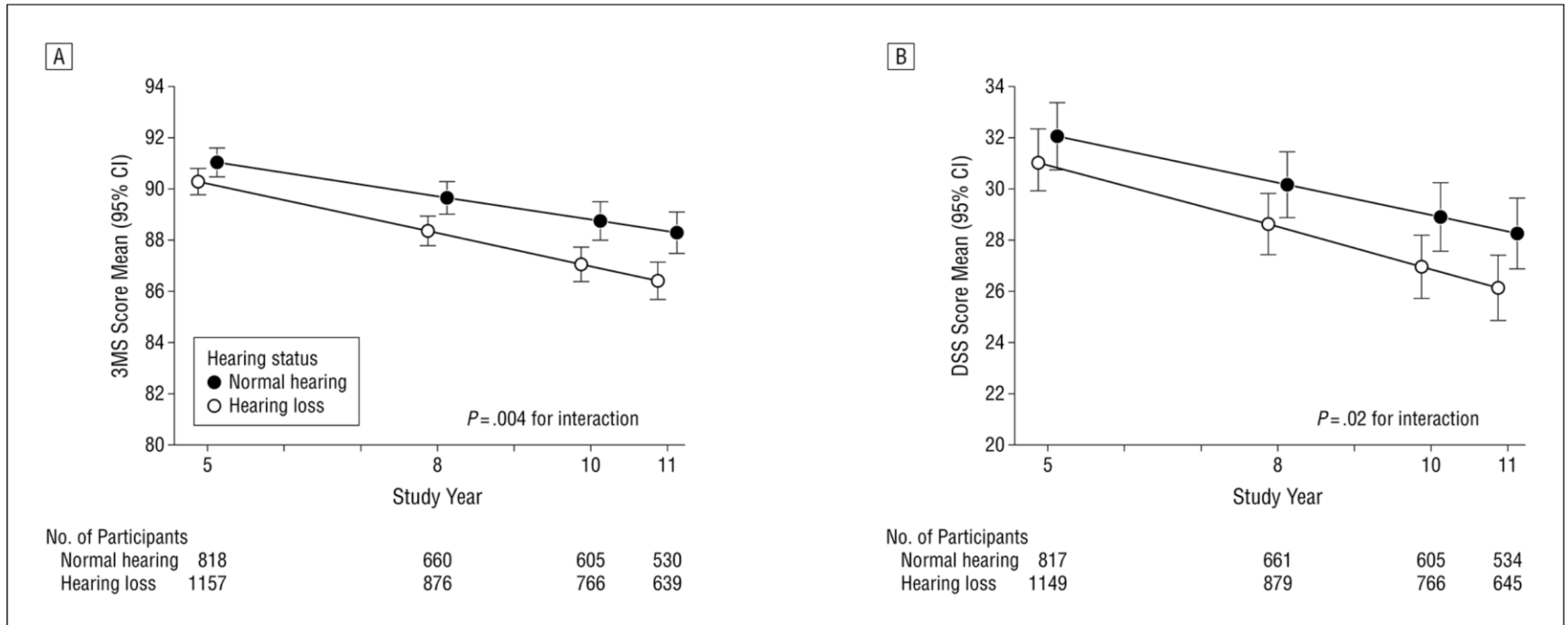
Dementia	Untreated hearing loss
Social isolation	Social isolation
Decreased comprehension	Decreased understanding / comprehension
Repeating questions	Repeating questions
Short-term memory problems	Working memory problems
Stereotyped / inappropriate word use	Stereotyped / inappropriate word use
Difficulty following conversation	Difficulty following conversation

Hearing Loss and Dementia



- One study estimates that people with a mild hearing loss are twice as likely to develop dementia; three times as likely for a moderate loss and five times as likely for a severe loss (Lin et al, 2011, Arch Neurol.).

Hearing Loss and Cognitive Decline



Faster rate of cognitive decline for subjects with a hearing loss (Lin et al. JAMA Int Med. 2013)

Hearing Aids and Dementia

“In cross-sectional modelling in a large sample of UK adults, **hearing aid use was associated with better cognition.**”

“The positive association of hearing aid use on cognition that was observed in the present study was **independent of [...] social isolation or depression.**” (Dawes et al, 2015)

Where we
started...2013

Nottingham University Hospitals **NHS**
NHS Trust

SUPPORTING PEOPLE WITH DEMENTIA AND HEARING LOSS

Do you know someone with Dementia, if so
have they had their hearing tested recently?

Nottingham Audiology Services
now offers a specialist service for
people with Dementia. We
provide high quality digital
hearing aids, regular servicing
and batteries all through the NHS.
To obtain an appointment, please
seek a referral by a GP to:-

Nottingham Audiology Services
113 The Ropewalk
Nottingham
NG1 5DU
E: audiology@nuh.nhs.co.uk
T: 0115 9194488
F: 0115 9485515

We are here for you

We are here for you

Why?

- **Prevent repeat appointments**
 - **Larger %age of patients being seen on regular clinics**
 - **Patients seen as challenging**
 - **often ending up on complex clinics**
- **Already had dedicated service for adults with learning disability**

Referrals

- **Accept referrals for every pt with current or pending diagnosis of Dementia**
- **referrals from GP, Community teams and Hospital Drs**
- **referrals in house from other clinicians**

What do we do?

A Dementia Service Appointment:

- Dedicated 1 hour appointment
- Flexibility
- Consistency
- Re-printable earmoulds (3D printed)
- Regular rolling Follow Ups
- Patient and Carer support pack
- Duplicate Aids

About Me

Filling in this form will help our team to understand your loved one as a person, communicate with them better and help us to structure appointments and hearing care around their individual needs.

Feel free to give as much information as you are able; the more we have the better.

I like to be called:

Significant people in my life are:

Family:

Husband/Wife:

Friends:

Pets:

My life so far:

Work:

We are here for you

Important aspects of my daily routine: (eg, sleep patterns)



Significant people in my life are:

Family:

Husband/Wife:

Friends:

Pets:

What helps me relax: (listen to music, talk to someone, spend time alone)

How I respond to stress: (become quiet, pace around, shout out)



This form was completed by:

Relationship to patient:

Does it work?

Positive feedback from family and carers



Significant difference seen in patients' communication and lucidity



Increase in outpatient Dementia clinic referrals



What happened next



We are here for you

Why Inpatients?

Communication

- **Consent**
- **Compliance**
- **Dementia Assessment**
- **Background noise on wards**

Aim:

- Improve access to hearing aid services
- Improve the experience for patients and carers
- Raise awareness of hearing loss and its impact on communication

An easy to access comprehensive service for in-patients across Nottingham University Hospitals.

Benefits

- **Reduced lost hearing aids**
- **Improved ward communication**
- **Increased Awareness**
- **Reduce Distress**
- **Hearing Tests for bed-bound patients**

The audiology dementia team- NUHonours award winners 2015



What's Next?

- **Dementia Friendly Clinic Room**
- **Developing Home Visits service in conjunction with current outpatient services**
- **Outcome measures – IQIPS**
- **Further Inpatient and care home projects with the BRU**

Long Term goal = PTA as part of Dementia Assessment Pathway?

Questions?

We are here for you

References

- Dawes et al, 2015. **Hearing Loss and Cognition: The Role of Hearing Aids, Social Isolation and Depression.** PLoS ONE 10(3): e0119616
- Dementia UK Update, Alzheimer's Society, 2014
- Joining Up Report, Action On Hearing Loss
 - Why people with hearing loss or deafness would benefit from an integrated response to long-term conditions
- Lin et al, 2011. **Hearing loss and incident dementia.** Arch Neurol. 68(2):214-20
- Palmer et al, 1999. **Reduction in Caregiver-Identified Problem Behaviors in Patients With Alzheimer Disease Post-Hearing-Aid Fitting.** Journal of Speech, Language, and Hearing Research 42: 312–328
- Jorgensen L, Palmer C, Fischer G (2014) 'Evaluation of Hearing Status at the Time of Dementia Diagnosis' *Audiology Today*, Jan/Feb 2014: 38-45
- Lin et al. **Hearing Loss and Cognitive Decline among Older Adults** JAMA Int Med. 2013